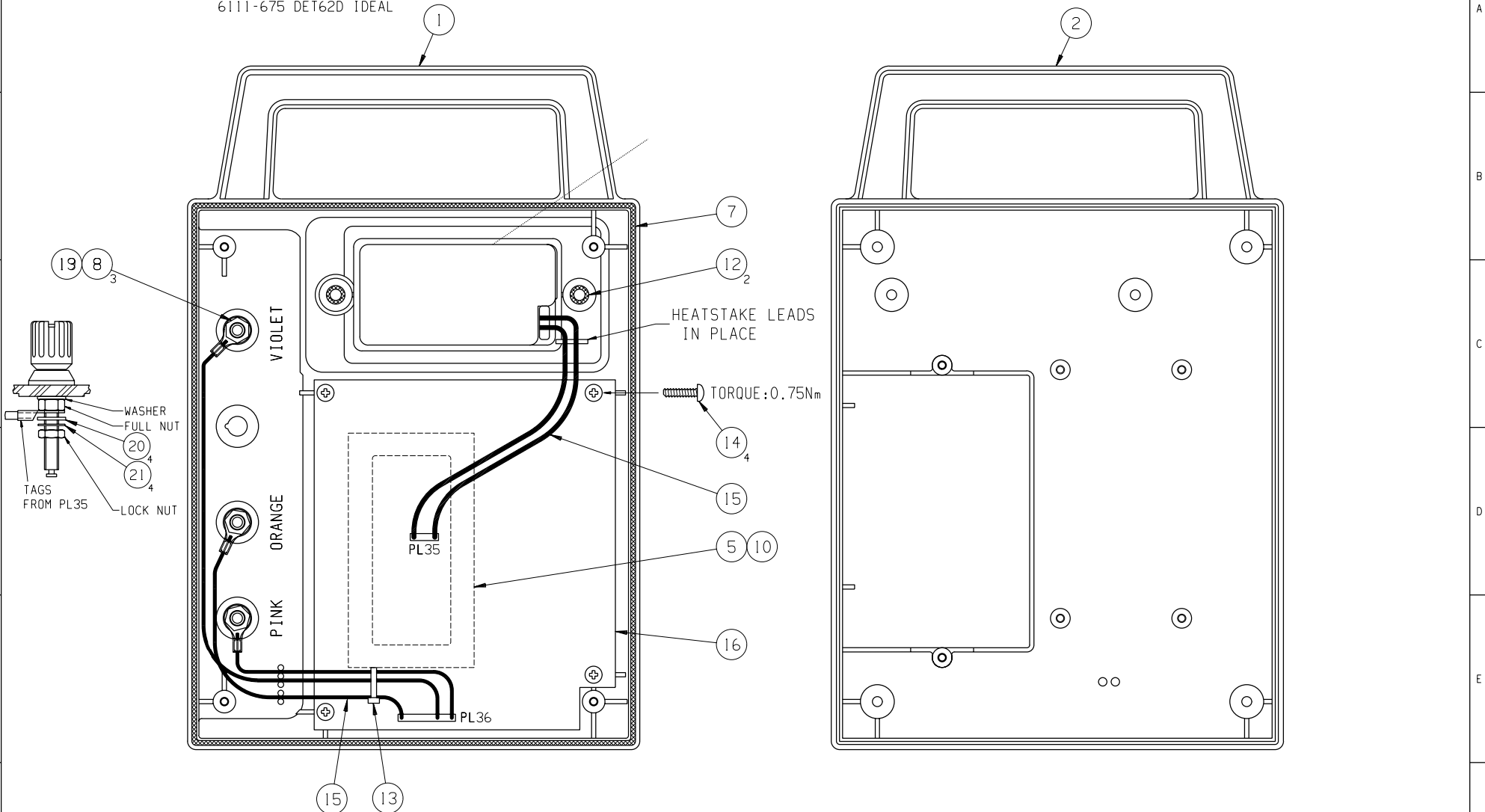


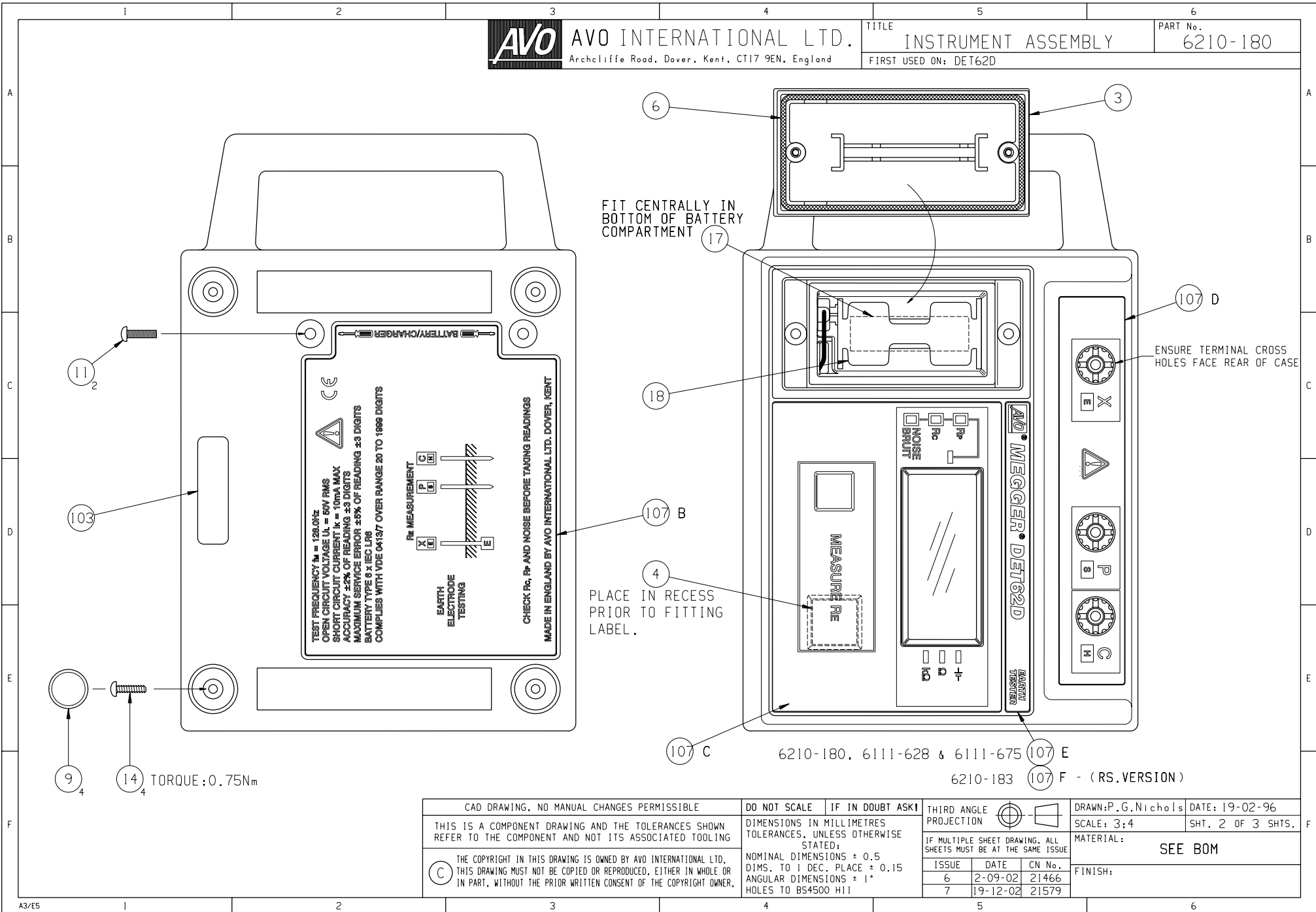
NOTE -  
 FOR ITEMS 1 -99 SEE BOM 6111-230 DET62D  
 6111-628 DET62D MTEK  
 6111-675 DET62D IDEAL

**AVO** AVO INTERNATIONAL LTD.  
 Archcliffe Road, Dover, Kent, CT17 9EN, England

TITLE	INSTRUMENT ASSEMBLY	PART No.	6210-180
FIRST USED ON: DET62D			



CAD DRAWING. NO MANUAL CHANGES PERMISSIBLE		DO NOT SCALE	IF IN DOUBT ASK	THIRD ANGLE PROJECTION	DRAWN: P.G. Nichols	DATE: 19-02-96	
THIS IS A COMPONENT DRAWING AND THE TOLERANCES SHOWN REFER TO THE COMPONENT AND NOT ITS ASSOCIATED TOOLING		DIMENSIONS IN MILLIMETRES TOLERANCES, UNLESS OTHERWISE STATED:		IF MULTIPLE SHEET DRAWING, ALL SHEETS MUST BE AT THE SAME ISSUE	SCALE: 3:4	SHT. 1 OF 3 SHTS.	
(C) THE COPYRIGHT IN THIS DRAWING IS OWNED BY AVO INTERNATIONAL LTD. THIS DRAWING MUST NOT BE COPIED OR REPRODUCED, EITHER IN WHOLE OR IN PART, WITHOUT THE PRIOR WRITTEN CONSENT OF THE COPYRIGHT OWNER.		NOMINAL DIMENSIONS ± 0.5 DIMS. TO 1 DEC. PLACE ± 0.15 ANGULAR DIMENSIONS ± 1° HOLES TO BS4500 H11			MATERIAL:	SEE BOM	
				ISSUE	DATE	CN No.	
				6	2-09-02	21466	
				7	19-12-02	21579	
				FINISH:			



FIT CENTRALLY IN BOTTOM OF BATTERY COMPARTMENT

PLACE IN RECESS PRIOR TO FITTING LABEL.

ENSURE TERMINAL CROSS HOLES FACE REAR OF CASE

TEST FREQUENCY  $f_m = 125.0\text{Hz}$   
 OPEN CIRCUIT VOLTAGE  $U_L = 50\text{V RMS}$   
 SHORT CIRCUIT CURRENT  $I_k = 10\text{mA MAX}$   
 ACCURACY  $\pm 5\%$  OF READING  $\pm 3$  DIGITS  
 MAXIMUM SERVICE ERROR  $\pm 5\%$  OF READING  $\pm 3$  DIGITS  
 BATTERY TYPE 6 x IEC LR6  
 COMPLIES WITH VDE 04137 OVER RANGE 20 TO 1888 DIGITS

CE

⚠

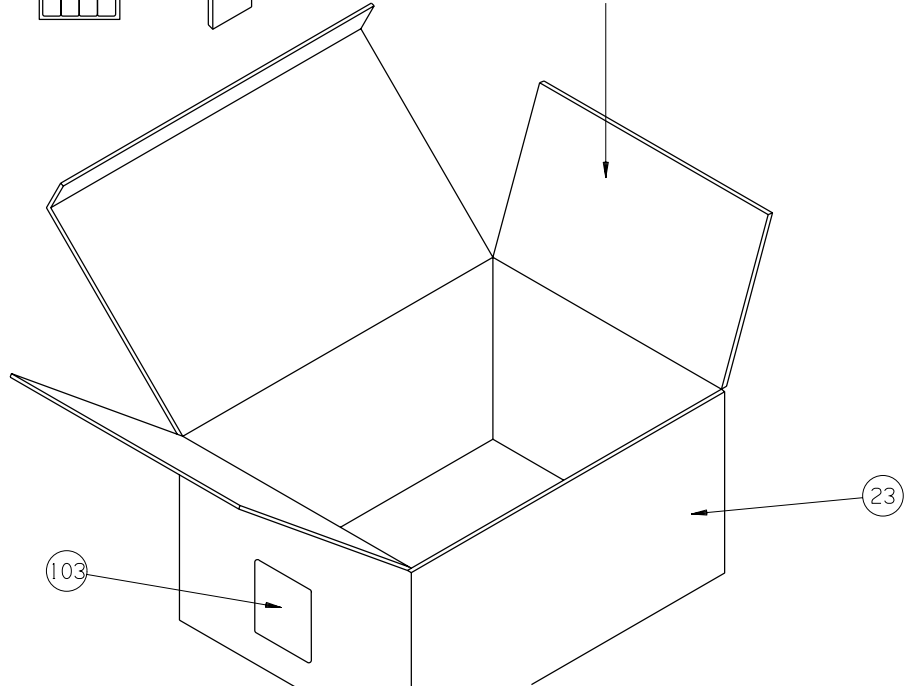
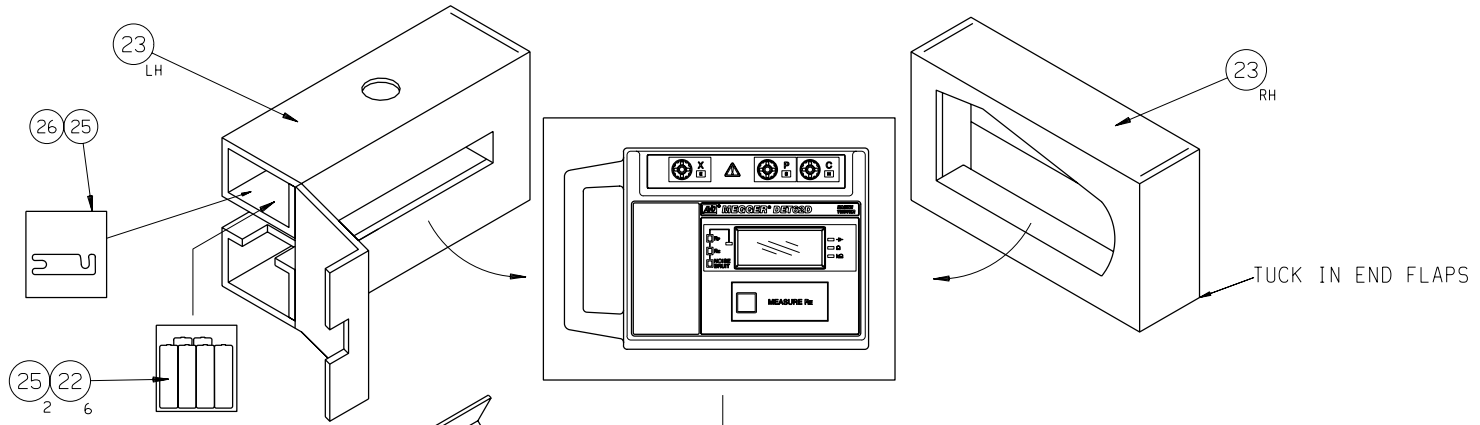
RE MEASUREMENT

EARTH ELECTRODE TESTING

CHECK R<sub>C</sub>, R<sub>P</sub> AND NOISE BEFORE TAKING READINGS  
 MADE IN ENGLAND BY AVO INTERNATIONAL LTD., DOVER, KENT

6210-180, 6111-628 & 6111-675 107 E  
 6210-183 107 F - (RS.VERSION)

CAD DRAWING, NO MANUAL CHANGES PERMISSIBLE THIS IS A COMPONENT DRAWING AND THE TOLERANCES SHOWN REFER TO THE COMPONENT AND NOT ITS ASSOCIATED TOOLING THE COPYRIGHT IN THIS DRAWING IS OWNED BY AVO INTERNATIONAL LTD. THIS DRAWING MUST NOT BE COPIED OR REPRODUCED, EITHER IN WHOLE OR IN PART, WITHOUT THE PRIOR WRITTEN CONSENT OF THE COPYRIGHT OWNER.	DO NOT SCALE DIMENSIONS IN MILLIMETRES TOLERANCES, UNLESS OTHERWISE STATED: NOMINAL DIMENSIONS $\pm 0.5$ DIMS. TO 1 DEC. PLACE $\pm 0.15$ ANGULAR DIMENSIONS $\pm 1^\circ$ HOLES TO BS4500 H11	IF IN DOUBT ASK THIRD ANGLE PROJECTION IF MULTIPLE SHEET DRAWING, ALL SHEETS MUST BE AT THE SAME ISSUE	DRAWN: P.G. Nichols DATE: 19-02-96 SCALE: 3:4 SHT. 2 OF 3 SHTS.
	MATERIAL: SEE BOM		
	FINISH:		



- NOTES
1. PUT INSTRUMENT INTO POLYTHENE BAG (ITEM 27) AND SECURE WITH SELLOTAPE (ITEM 24). PLACE BATTERIES INTO POLYTHENE BAG (ITEM 25) & ATTACH BAG WITH SELLOTAPE (ITEM 24) IN A POSITION SO THAT THE BATTERIES CAN BE VIEWED THROUGH HOLE IN PACKING (ITEM 23). PLACE SHORTING LINK (ITEM 26) IN POLYTHENE BAG (ITEM 25) AND INSERT IN SAME COMPARTMENT AS BATTERIES.
  2. FOR 6210-180, 6111-628 & 6111-675 PLACE USER GUIDE (ITEM 100), CERTIFICATE OF TEST (ITEM 111) AND WARRANTY CARD (ITEM 101) ON TOP OF INSTRUMENT.  
  
OR FOR RS. VERSION 6210-183 PLACE USER GUIDE (ITEM 100), CERTIFICATE OF TEST (ITEM 111) AND WITH REPAIR QUESTIONNAIRE (ITEM 110) ON TOP OF INSTRUMENT.

CAD DRAWING, NO MANUAL CHANGES PERMISSIBLE		DO NOT SCALE	IF IN DOUBT ASK	THIRD ANGLE PROJECTION	DRAWN: P.G. Nichols	DATE: 19-02-96
THIS IS A COMPONENT DRAWING AND THE TOLERANCES SHOWN REFER TO THE COMPONENT AND NOT ITS ASSOCIATED TOOLING		DIMENSIONS IN MILLIMETRES TOLERANCES, UNLESS OTHERWISE STATED:		IF MULTIPLE SHEET DRAWING, ALL SHEETS MUST BE AT THE SAME ISSUE	SCALE: 1:4	
(C) THE COPYRIGHT IN THIS DRAWING IS OWNED BY AVO INTERNATIONAL LTD. THIS DRAWING MUST NOT BE COPIED OR REPRODUCED, EITHER IN WHOLE OR IN PART, WITHOUT THE PRIOR WRITTEN CONSENT OF THE COPYRIGHT OWNER.		NOMINAL DIMENSIONS $\pm 0.5$ DIMS. TO 1 DEC. PLACE $\pm 0.15$ ANGULAR DIMENSIONS $\pm 1^\circ$ HOLES TO BS4500 H11			MATERIAL: SEE BOM	
				ISSUE	DATE	CN No.
				6	2-09-02	21466
				7	19-12-02	21579
				FINISH:		